



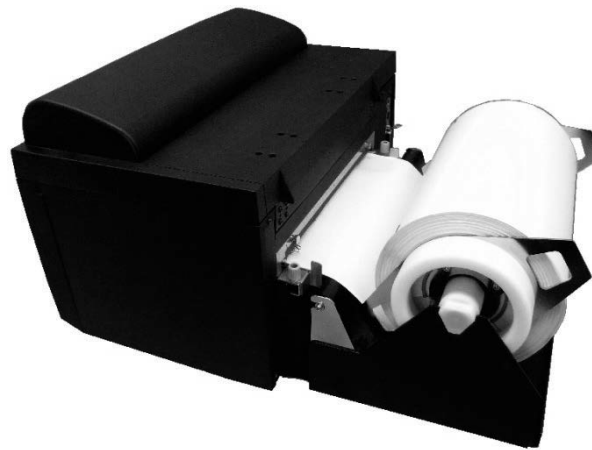
Unwinder

# UWG112

## Installation Manual

Thank you for purchasing the UWG112 Unwinder (hereinafter referred to as “this product”) for the SG112-ex at this time.

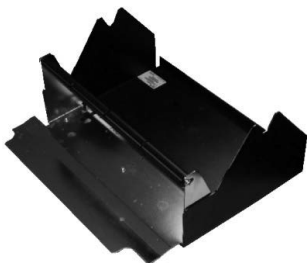
After thoroughly reading this manual, please properly use this product.



### Checking the Bundled Items

After opening the box, check that the following bundled items are all present.

If anything is missing, inquire with the retailer, or dealer where this product was purchased.



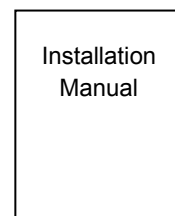
Media feeder tray



Media feeder spindle



Roll guide  
(2 pieces)



Installation Manual  
(This manual)



\*Q05228500\*

First edition: Jan. 2019 Q05228500  
©2019 SATO Corporation

## Installing this Product

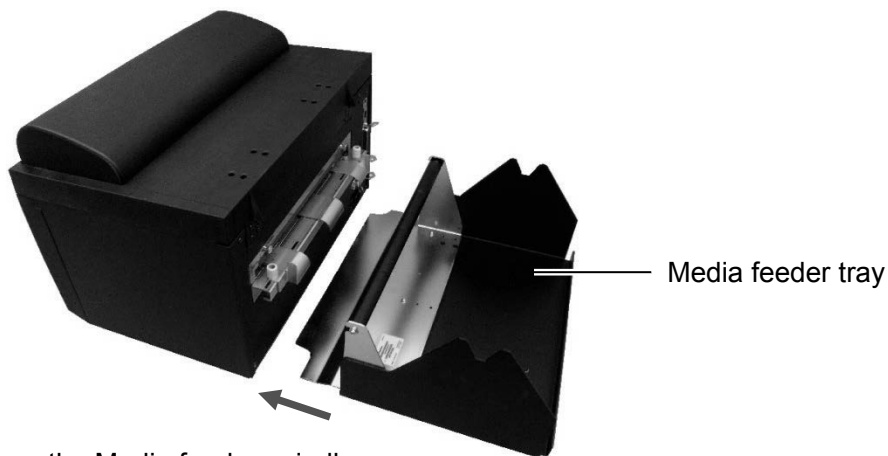


**CAUTION**

- Set up this product on the same floor as the SG112-ex main unit so that the SG112-ex and this product do not protrude from desks, etc.
- When setting this product on the floor or a stand, make sure not to get your fingers or hands pinched.
- Do not carry this product with media loaded in it. The media could fall out and cause an injury.
- Be careful in handling this product so that injuries are not sustained from this product's corners.

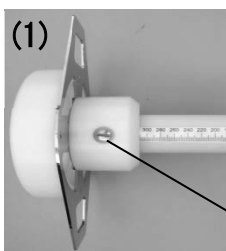
1. Set the Media feeder tray onto the SG112-ex.

Insert the end of the Media feeder tray so that it is in between the SG112-ex's rubber feet.



2. Set the Roll guides on the Media feeder spindle.

- (1) Set one Roll guide (with the securing screw) to match the Media roll's media width, and tighten and secure the securing screw. Use the scale sticker on the Media feeder spindle as a guide for the media width.
- (2) Set the Media roll onto the Media feeder spindle.
- (3) Set the Roll guide on the opposite side.



Securing screw



3. Place the Media feeder spindle you set in step 2 on the Media feeder tray so that it fits in the bearings. Set it so that the printing surfaces of the labels which are going to be fed are facing upward.

